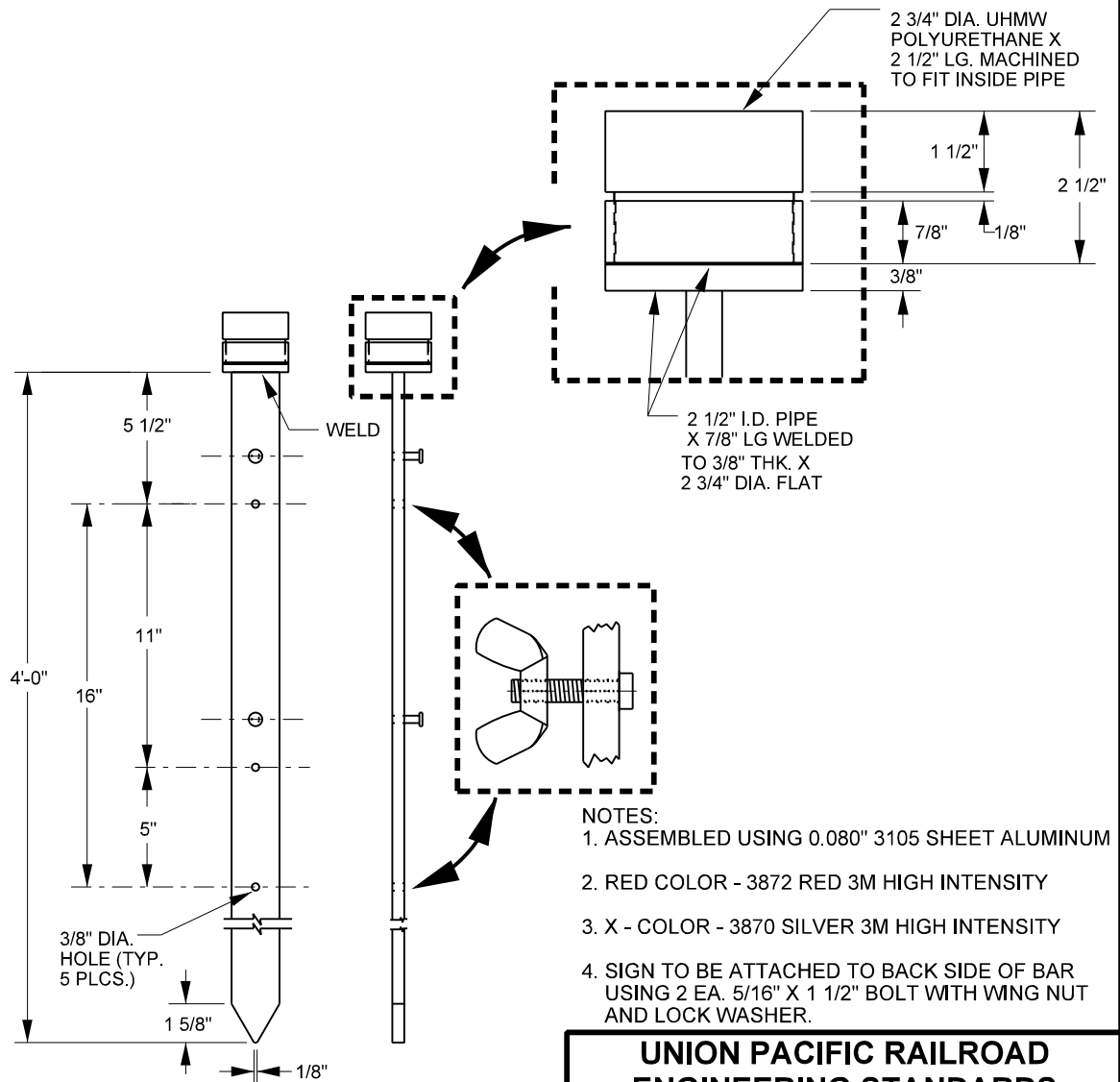


FLAG FOR PROTECTING CROSSING
ITEM NO. 393-3235



1/2" X 2" X 48" STEEL BAR
ITEM NO. 393-7790

- NOTES:
1. ASSEMBLED USING 0.080" 3105 SHEET ALUMINUM
 2. RED COLOR - 3872 RED 3M HIGH INTENSITY
 3. X - COLOR - 3870 SILVER 3M HIGH INTENSITY
 4. SIGN TO BE ATTACHED TO BACK SIDE OF BAR USING 2 EA. 5/16" X 1 1/2" BOLT WITH WING NUT AND LOCK WASHER.

**UNION PACIFIC RAILROAD
ENGINEERING STANDARDS**

**NON-CONTROLLED
CROSSING O.O.S. SIGN**

ITEM	ITEM NO.
SIGN ONLY	393-3235
STEEL BAR ONLY	393-7790
*KIT	393-3240

*KIT INCLUDES 2 SIGNS,
2 STEEL BARS, HARDWARE
AND CARRY CASE



ADOPTED: SEP. 21, 2020
REVISED:
FILE NO.: 0535

STD DWG

0535