

Aldon® Mouse Trap and Spur Track Guardian Sign Holders

Installation & Operation Instructions

4015-95 & 4015-122



ALDON®
Safety on Track Since 1904

Aldon Company, Inc. | 3410 Sunset Avenue | Waukegan, Illinois 60087

PH. 847.623.8800 | FX. 847.623.6139
www.aldonco.com | e-rail@aldonco.com

Parts List

Mouse Trap Foot Operated Sign Holder 4015-95

- | | |
|---|----------------------------|
| (4 pcs) 1/2" - 13 x 2-1/2" Lag Hex Screws | (2 pcs) 1/4" Lock Washers |
| (4 pcs) 1/2" Flat Washers | (2 pcs) 1/4" - 20 Hex Nuts |
| (2 pcs) 1/4" - 20 x 1-1/2" Sign Bolts | |

Spur Track Guardian Foot Operated 4015-122

- | | |
|---|--------------------------------|
| (4 pcs) 1/2" - 13 x 2-1/2" Lag Hex Screws | (2 pcs) 1/4" Lock Washers |
| (4 pcs) 1/2" Flat Washers | (2 pcs) 1/4" - 20 Hex Nuts |
| (1 pc) 1/4" - 20 x 2-1/2" Sign Bolt
w/ rubber bumper | (1 pc) Solar Light w/Bracket |
| (1 pc) 1/4" - 20 x 1-1/2" Sign Bolt | (1 pc) 3/8" Self-Tapping Screw |
| | (1 pc) 12" x 15" Sign Plate |

Placement of Sign Holder

- Our Mouse Trap and Spur Track Guardian sign holders should be installed on wood ties only.
- It should be placed 50 feet ahead of any work being performed.
- If you are using our Spur Track Guardian sign holder, make sure it is installed in a sunny area so the solar light can recharge.

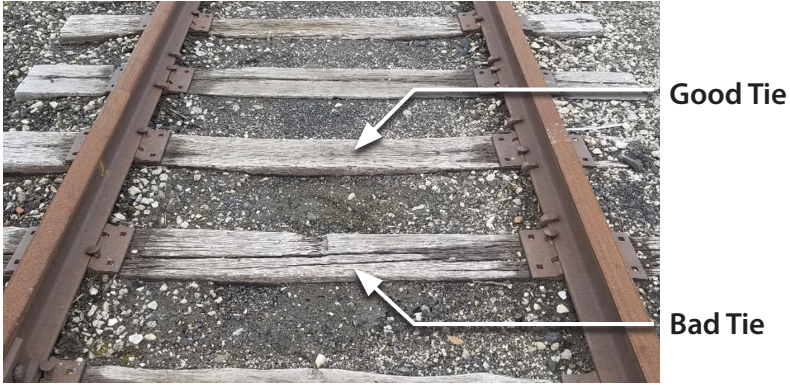
Have A Question?

"ASK ALDON"

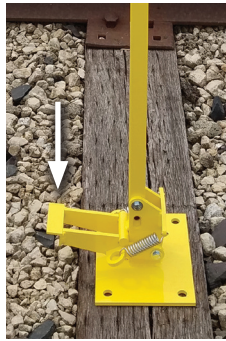
AskAldon@aldonco.com

Installation Instructions

1. Find a good tie that is not rotten or splitting.



2. Place the sign holder in an upright position on the tie, making sure it is facing the proper direction. The foot pedal and sign plate should always face the direction rail traffic is coming from.



Foot pedal is facing the direction of oncoming rail traffic.

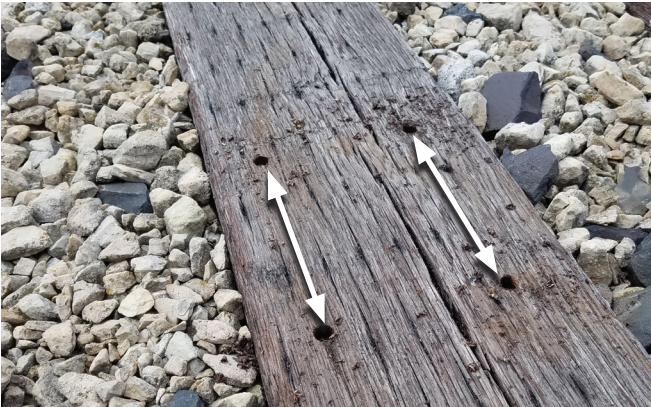
Arrow indicates the direction rail traffic is coming from.

Installation Instructions

3. Mark all four holes on the base of the sign holder.
Use a marker or a drill as pictured.

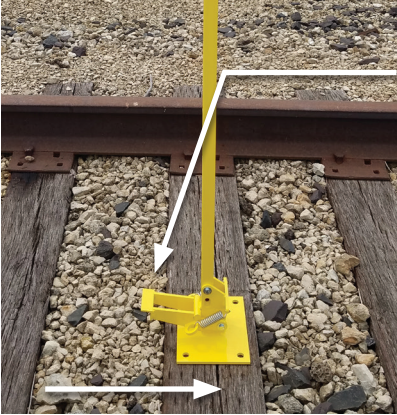


4. Next, predrill the four marked holes to a depth of 2-1/2" using a 7/16 drill bit.



Installation Instructions

- Now, place the sign holder over the four predrilled holes in an upright position facing the proper direction.



Foot pedal is facing the direction of oncoming rail traffic.

Arrow indicates the direction rail traffic is coming from.

- Use a $3/4$ " socket or wrench to install four $1/2$ "-13 x $2-1/2$ " hex screws with washers through the base of the sign holder.

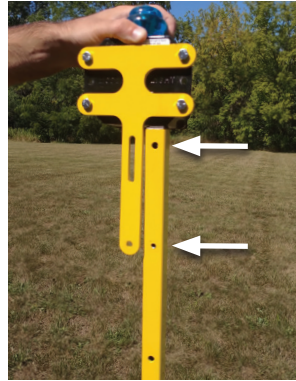


Make sure all four screws are securely fastened so the sign holder can operate properly.

Installation Instructions

Solar Light Installation for 4015-122 Only. (Steps 7-11)

7. Use a 3/8" socket or wrench to remove the self-tapping screw near the top of the sign pole. Solar light bracket is mounted on same side of pole as self-tapping screw.



8. Insert the sign bolt with the rubber bumper through the elongated hole on the solar light bracket, and continue inserting the sign bolt through the top hole on the sign pole.



Installation Instructions

9. Next, align the top hole of the sign plate with the sign bolt. Use a 1/4" lock washer and hex nut to hold the sign plate and solar light in place. **Do not tighten sign bolt completely.**



10. Then, insert the second sign bolt using a 1/4" lock washer and hex nut to fasten sign plate. **Do not tighten sign bolt completely.**

11. Reinstall the self-tapping screw through the lower hole on the light bracket. It may be necessary to move the light bracket up or down to fasten the screw to the sign holder.



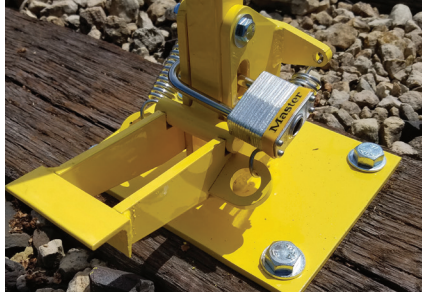
Make sure the self-tapping screw is tightened completely.

Installation Instructions

12. Finish tightening both sign bolts.



13. A padlock can be applied to the sign holder in both positions.



The padlock is being installed on the sign holder with the sign in the active position. **Padlocks are sold separately.** (4124-164)

How to Operate the Sign Holder

How to Lower the Sign Holder.

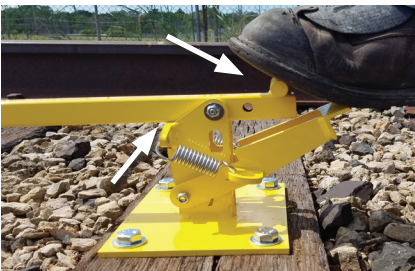
1. With the sign holder in the upright position, press slowly down on the foot pedal with the ball of your foot. Keep the tip of your foot on the bottom of the sign pole.



2. As the sign pole falls away from you, control the fall with the tip of your foot by applying pressure to the bottom of the sign pole.



3. Keep applying pressure to the bottom of the sign pole until it has bottomed out on the base of the sign holder. Do not let the sign pole free fall, this could cause damage to the sign holder and solar light (if light is attached).



How to Operate the Sign Holder

How to Raise the Sign Holder

1. To raise the sign holder to the upright position, press firmly down on the bottom of the sign pole with the tip of your foot.



2. Continue pressing downward on the sign pole as it continues to rise.



3. Once the sign pole is in the upright position, grasp the sign pole with your hand and slowly lift your foot off the pedal.



The foot pedal will keep the sign pole in a fixed upright position.

Related Items

Spike Down Hinged Sign Holder

Hinged sign holder folds down in either direction. Two track spikes fasten sign holder to a tie. Spikes are included. Sign plate and padlock are sold separately.



4015-06

Permanent Hinged Sign Holder

Clamps to base of rail and folds down flat when not in use. Can be padlocked in the active position. Sign plate and padlock are sold separately.



4015-05

Enhanced Blue Flag Sign Plates - 18"x 15"

These signs feature a picture to supplement the sign plate wording. Fits any existing Aldon® sign holder.



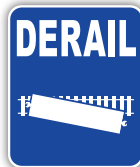
7STOP-B



7SCC-B



7SMAW-B



7DERAIL-B



7SEW-B



Aldon Company, Inc. | 3410 Sunset Avenue | Waukegan, Illinois 60087

PH. 847.623.8800 | FX. 847.623.6139
www.aldonco.com | e-rail@aldonco.com

Follow us on



Printed in USA September 2021